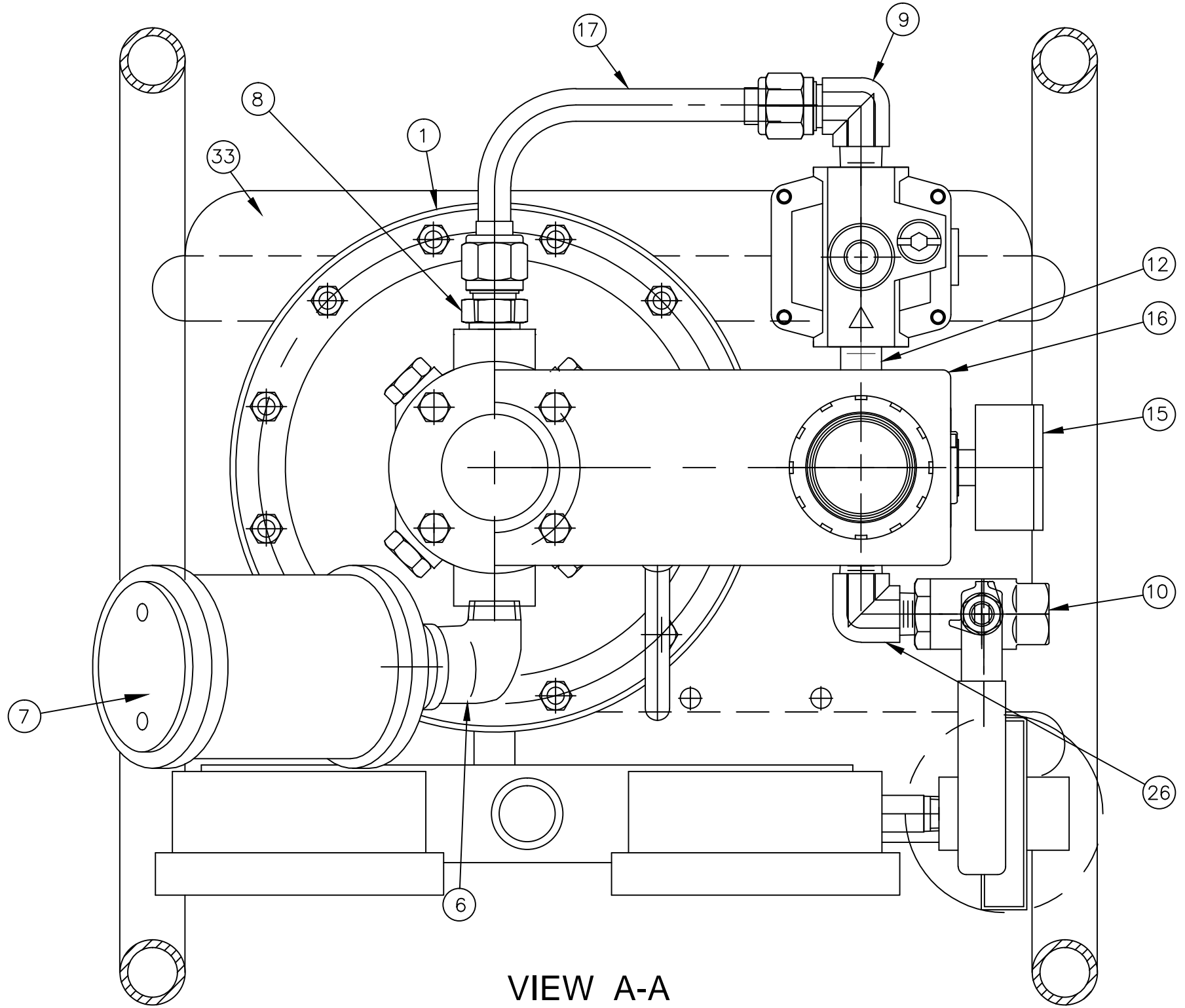


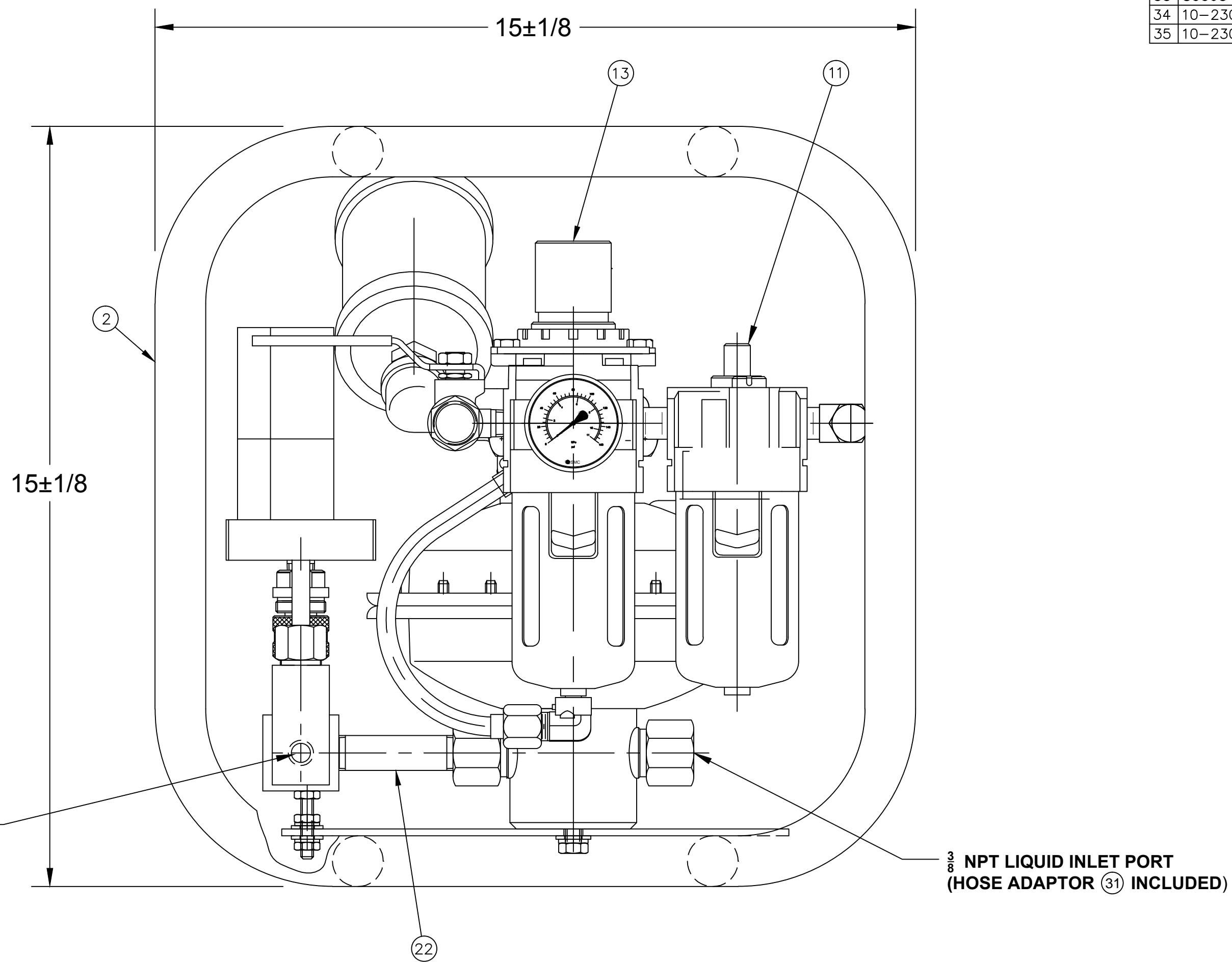
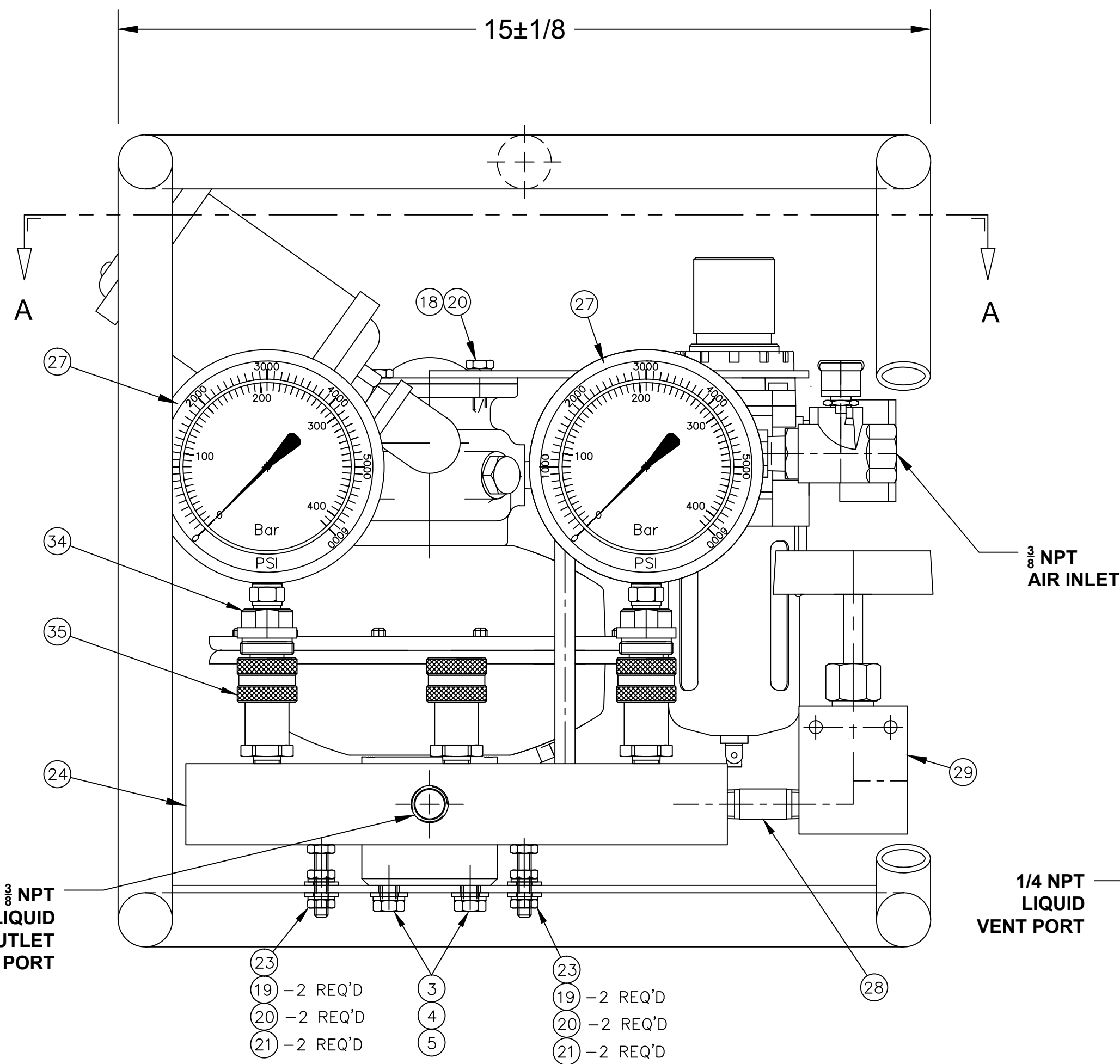
P/N	MODEL	MAX. DRIVE PRESSURE	MAX. OUTLET PRESSURE
SPG-1400-010-0X	S-1400-J-10	100	1,000
SPG-1400-020-0X	S-1400-J-20		1,850
SPG-1400-030-0X	S-1400-J-30		3,100
SPG-1400-035-0X	S-1400-J-35		4,600
SPG-1400-060-0X	S-1400-J-60		6,100
SPG-1400-100-0X	S-1400-J-100		8,800
SPG-1400-035-2X	S-1400-JB-35		4,600
SPG-1400-060-2X	S-1400-JB-60		6,100
SPG-1400-101-2X	S-1400-JB-101		10,000

SPG-1400-XXX-XX
 NOM RATIO ——— SEAL COMPOUND
 PORTS ———
 -0X 1/2 NPT OUTLET —x1 NITRILE
 -2X JB w/1/2 NPT OUTLET —x2 CHLOROPRENE
 —x3 FLUOROCARBON
 —x4 ETHYLENE PROPYLENE



VIEW A-A

PART NO.	DESCRIPTION	-010-0X	-020-0X	-030-0X	-035-0X	-060-0X	-100-0X	-035-2X	-060-2X	-101-2X
79293-1x	PUMP ASSY, 10:1, S-216-J-10	1								
77894-1x	PUMP ASSY, 20:1, S-216-J-20	1								
77894-2x	PUMP ASSY, 30:1, S-216-J-30		1							
77895-8x	PUMP ASSY, 35:1, S-216-J-35			1						
77895-1x	PUMP ASSY, 60:1, S-216-J-60				1					
77895-2x	PUMP ASSY, 100:1, S-216-J-100					1				
94186-035-01	PUMP ASSY, 35:1, S-216-JB-35							1		
94186-060-01	PUMP ASSY, 60:1, S-216-JB-60								1	
94186-101-01	PUMP ASSY, 100:1, S-216-JB-101									1
2	SPG-0015									1
3	MS90725-31									2
4	MS35338-45									2
5	MS27183-12									2
6	89838-8G.12									1
7	89853									1
8	AN816-8-8D									1
9	MS20822-8D									1
10	89443									1
11	94287									1
12	89830B-1.00									1
13	94286									1
14										
15	94293									1
16	SPG-0021									1
17	SPG-0017									1
18	MS90725-6									2
19	MS27183-10									4
20	MS35338-44									6
21	MS51967-2									4
22	88641-39					1				
22	88641-40								1	
23	92124-06B10Z								2	
24	SPG-0016									1
25										
26	93741-1									1
27	89841-2		2							
27	89841-3		2							
27	89841-4			2						
27	89841-12									2
27	89841-5									2
27	89841-11									2
28	88641-27									1
29	NVI-10-4N									1
30										
31	SPG-0019									1
32	SPG-0020									1
33	80063-2									1
34	10-230-6402									3
35	10-230-1452									3



NOTES:
 1. LINEAR DIMENSIONS IN INCHES.
 2. TEST PER SPEC SP15-229
 3. ONE EACH OF ITEM 31, 32 AND 34 SUPPLIED LOOSE WITH POWER UNIT.

GEOMETRIC SYMBOLS per ANSI Y14.5M-1982

TOLERANCE: UNLESS OTHERWISE NOTED
 FRACTIONS: ±1/8
 2 PLG. DECIMALS: ±.06
 3 PLG. DECIMALS: ±.030
 ANGLES: ±1° SURFACE 125 RMS

THIS DESIGN IS THE PROPERTY OF SPRAGUE PRODUCTS AND IS NOT TO BE COPIED, DUPLICATED OR USED AS THE BASIS FOR MANUFACTURE OR SALE OF EQUIPMENT WITHOUT OUR WRITTEN PERMISSION.

MATERIAL: _____ FINISH: _____

HEAT TREAT: _____

DR. BY	DATE	CHK.	DATE	SCALE
BWS	5/9/14	BWS	5/15/14	1/2

S-1400-J & -JB POWER UNIT (SIZES 10 THRU 101 - NPT)

SPRAGUE PRODUCTS
 CURTISS-WRIGHT CORP.
 BRECKSVILLE, OHIO

SIZE	DRG. NO.	REVISED
D	SPG-1400	-