

## Air Driven Power Units

Choose an air driven power unit from Sprague Products for portable and stationary applications. All units are assembled and ready to use, saving you the time and money you would spend selecting, assembling and testing other supply systems.

### HSU-1100 (S-440)

- Standard unit for general use.
- Components include S-216-J(-)-SS pump, air filter, pressure regulator and lubricator, air shut-off valve, muffler, liquid bleed valve, air pressure gauge, liquid-filled liquid pressure gauge with quick disconnect fitting.
- Steel base has four mounting holes.
- Available as HSU-1102 with the addition of a by-pass circuit that allows quick fills from your inlet source.

### HSU-1101

- Compact power unit has same components as HSU-1100 with the addition of a three gallon (11.4 liters) stainless steel reservoir.
- Reservoir is fitted with filter-breather-screen assembly, suction filter inline to pump, and sight glass to show liquid fill point.
- Base flanges of reservoir have four mounting holes.
- Designed to improve suction capability of higher ratio pumps and eliminate dry start-ups.

### HSU-1200 (S-441)

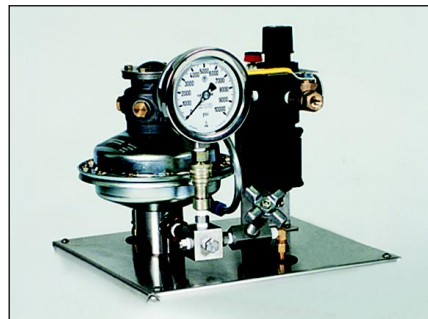
- Compact, lightweight unit for general use.
- Occupies slightly more than one cubic foot of space and weighs six lbs. (2.7kg) less than HSU-1100.
- Components include S-216(-) pump, air filter, pressure regulator and lubricator, air shut-off valve, muffler, manifold, liquid bleed valve, air pressure gauge, liquid-filled liquid pressure gauge with quick disconnect fitting.
- Stainless steel base has four mounting holes.

### HSU-1300 (S-439)

- Compact power unit has same components as HSU-1200 with the addition of a five gallon (18.9 liters) stainless steel reservoir.
- Reservoir is fitted with filler-breather-screen assembly, suction filter inline to pump, and sight glass which shows liquid fill point.
- Base flanges of reservoir have four mounting holes.

### HSU-1400 (Sprague)

- Sturdy, portable unit with 15" square tubular frame for general use.
- Components include S-216(-) pump (ten ratios), air filter, pressure regulator and lubricator, muffler, manifold, liquid bleed valve, air pressure gauge, liquid-filled liquid pressure gauge with quick disconnect fitting.
- Dual gauge set-up available.



Specification sheets available for all power units.

A variety of Sprague and PowerStar™ pumps offer liquid output pressures up to 33,500 psi (2311 bar). These rugged pumps service water, oil and most corrosive chemicals, and are virtually maintenance-free.

### HSU-1500 (Sprague)

- Air-operated piston pump mounted on tubular frame with wheels for extreme portability.
- Hydro gauges, valves and pump regulator all panel-mounted.
- Output pressure adjusted by setting air pressure regulator to pump.
- Pump automatically shuts off at set pressure; re-starts when pressure drops.



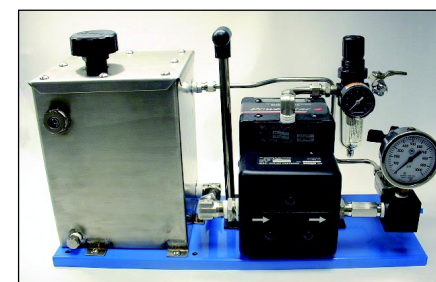
### HPU-1000 (PowerStar 4)

- Standard unit for general use.
- Components include PowerStar 4 pump, air filter, pressure regulator, air shut-off valve, air pressure gauge, liquid-filled liquid pressure gauge with quick disconnect fitting.
- Steel base has four mounting holes.



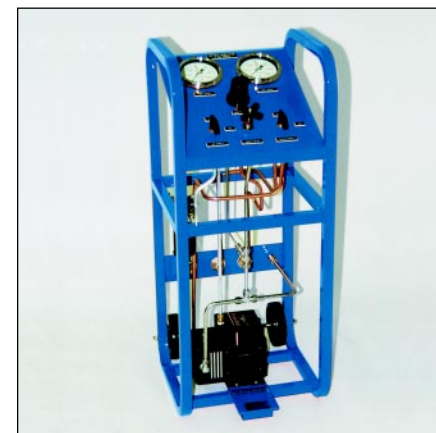
### HPU-1201 (PowerStar 4)

- Compact unit has same components as HPU-1000 with the addition of a three gallon (11.4 liters) stainless steel reservoir.
- Reservoir is fitted with filter-breather-screen assembly, suction filter inline to pump, and sight glass to show liquid fill port.
- Base flanges of reservoir have four mounting holes.



### HPU-1300 (PowerStar 4)

- Air-operated piston pump mounted on tubular frame with wheels for extreme portability.
- Hydro gauges, valves and pump regulator all panel-mounted.
- Output pressure adjusted by setting air pressure regulator to pump.
- Pump automatically shuts off at set pressure; re-starts when pressure drops.



Specification sheets available for all power units.

## Special Stainless Steel Power Units for Oil & Gas/Offshore

### HMU-1300 Power Unit

- Air-driven piston pump with built-in hand pump for critical testing
- Available pressure ranges from 1000 to 33,500 PSI
- 2 \_ gallon stainless steel reservoir with removable top cover and drain. Panel mounted 4" dial gauge, all SS glycerin filled, mirror dial. Panel mounted pump regulator, air gauge and high pressure drain valve.



### HPU-1200 Power Unit

- Air-driven Powerstar 4 pump
- Panel mounted 4" air gauge, 4" high pressure gauge, regulator, air shut-off valve, 2 directional control valve
- Five gallon stainless steel reservoir with removable top cover and drain
- Available pressure ranges from 500 to 33,500 PSI



### HSU-1501 Power Unit

- Air-driven lubricated J series pump with pressure ranges from 1000 to 33,500 PSI
- 1" Square tubular frame stainless steel, glycerin-filled, quick disconnect
- 3/8" Air inlet port with stainless steel ball valve, filter regulator with gauge, 50 micron filter
- Stainless steel manifold block, extra quick disconnect port for relief valves



Specification sheets available for all power units.



## Gas Booster Power Units

Sprague Products gas booster power units come assembled and ready to use. These units are suitable for general use as well as clean room and laboratory applications. The gas booster power units can be used within portable power supply circuits or stationary pneumatic circuits.

### HPB-1100 (Nitrogen Gas Booster Assembly-Dies & Molds, Plastics)

- Allows quick and easy charging of nitrogen gas springs and systems up to 2150 psi (150 bar) from nitrogen bottles. The assembly, driven by plant air pressure, provides a safe and controlled method of charging.
- The driven air is filtered and regulated, and a pre-installed internal muffler aids in noise reduction. A high pressure regulator is included on the discharge side of the assembly, along with a three meter charging hose assembly which allow precise control of charging of nitrogen gas springs and systems.
- Fast, efficient and economical method of pressurizing nitrogen gas for injection into polymer melt.
- Optional carrying case available.

### HPB-1200 (Fire, Rescue & Safety)

- Portable power unit for general purpose testing and filling tanks.
- Applications include:
  - Emergency slide and helicopter popfloats inflation
  - Breathable air filling of life support systems
  - Oxygen filling of life support systems
  - CO<sub>2</sub> filling of fire extinguishers
  - Halon filling and recovery of fire extinguishers
- Optional carrying case (not shown) available.

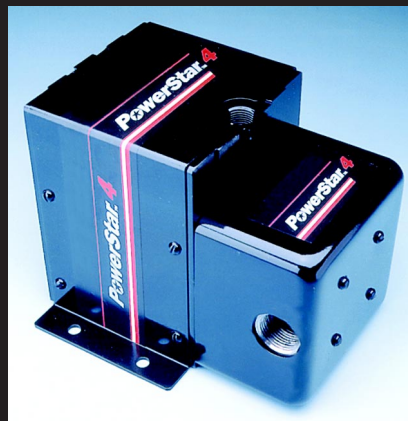
Specification sheets available for all power units.

## Valve Tester

### HSU-3000 (Valve Tester/Precision Calibrator)

- Simple hand pump operation; requires no external power.
- Features a clamping fixture to hold parts securely.
- Shop air or city water easily connected for pre-fill or leak test.

## Also from Sprague Products



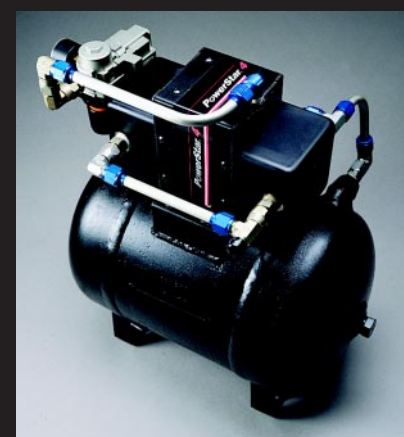
PowerStar™ 4 Advanced Air Driven Pump Systems



Hydraulic Pumps, Gas Boosters, Power Units, Specialty Valves & Accessories



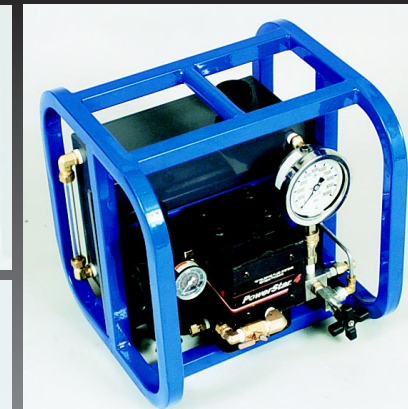
PowerStar™ Advanced Air Driven Gas Boosters



PowerStar™ 4 Advanced Air Driven Air Amplifiers

## Advanced Air Driven Power Units

# Power Units & Test Systems



10195 Brecksville Road, Brecksville, Ohio 44141 • 440/838-7690 • FAX: 440/838-7513  
Sprague Products U.K.: 202 St. Andrews Road, Bridport, Dorset DT6 3B6

Visit our website at [www.cwfc.com](http://www.cwfc.com)

© Sprague Products 2000  
Part No.: PU-10M900



TECHNOLOGY THAT CHANGES EVERYTHING™

